

Crane Quality Counselling

Home Furnishing



51/52 Mardol, Shrewsbury, SY1 1PP

Charity Number 1176610

**We collect donations of furniture
& all household items**

House Clearance Welcome

Monies raised will support out relationship/
bereavement/young person counselling service

Opening times

Monday– Saturday 10am-4pm

For a free collection service tel. 01743272303

Email: mardolcranecounselling@gmail.com

For counselling appointments tel. 01743 240 546

**Help individuals, couples, bereaved families and
young people– immediate appointments available**

Email: admin@cranecounselling.co.uk

Website: www.cranecounselling.co.uk

THE MESSENGER

Myddle, Harmer Hill, Broughton

Church & Community

A Volunteer Newsletter



Photo: Local MP Helen Morgan on Remembrance Sunday

December 2022 - January 2023

We'll be back in
bloom in Spring
2023.

Sign up to our newsletters
online to be the first to find out
when the field re-opens.

Use code:

MYDDLE15

to save 15% on your
first order.



Rectory | GARDEN
FLOWERS

Seasonal, Sustainable, Soulful Flowers

hello@rectorygardenflowers.co.uk
www.rectorygardenflowers.co.uk



SELF STORAGE on WEM BUSINESS PARK New Street, Wem, SY4 5JX

**SECURE LOCKED 'CONTAINER STORAGE'
in the centre of Wem**

- **YOU HAVE YOUR OWN KEY.**
- **MONTHLY, QUARTERLY OR ANNUAL TERMS.**
- **FOR TEMPORARY STORAGE OF FURNITURE, HOUSE CONTENTS, OFFICE EQUIPMENT, BUSINESS STOCK ETC, ETC.**
- **We have 8ft, 10ft and 20ft units**

**RING - BARRY on
07860 383939/01939 233248 or
Jayne on 07581 466102
Email — bhwem@live.co.uk**



**Our 4 star award winning
holiday barns are situated in rural Marton
just 2 miles from Myddle.**

**Whilst beautifully appointed the barns are dog friendly and
all benefit from their own private, secure garden.**

Short breaks and week-long holidays.

www.springfieldbarns.co.uk
donnacooke@springfieldbarns.co.uk



Knitting Wools & Yarns



- Branded Fashion and Classic Qualities
- Dye lot Ends
- Clearances from £1 per Ball
- Patterns and Needles
- Knitting Accessories
- Haberdashery

Shop Now Open To The Public

**Tuesday, Wednesday,
Thursday & Friday
9:00 am - 4:00 pm**

**Focuscraft, 3 Merrington Business
Park, Bomere Heath, SY4 3QJ
(T) 01939291848**

Green Hollow Veterinary Surgery

**D.W.Thurston. B.Vet.MED
M.R.C.V.S.**

**School Road, Ruyton X1 Towns. Nr
Shrewsbury
01939 261216**

**High Ridge, Wem Road, Shawbury, SY4 4NW
01939 251180**

**Domestic Pet, Horse and Farm Animal
Practice**

24 Hour Emergency Service

**Consultation by appointment.
Morning, afternoon and evening services**

ALL NEW CLIENTS WELCOME

The Railway Children Return

Cert: PG - 95 mins



Wed 21st Dec - 7.30 pm

Myddle Village Hall

Admission: Adults: £5 16yrs and under: £2.50

Enquiries: 07706 450075

Interval refreshments and Bar available.
Doors open at 7.00pm with film start at 7.30pm.

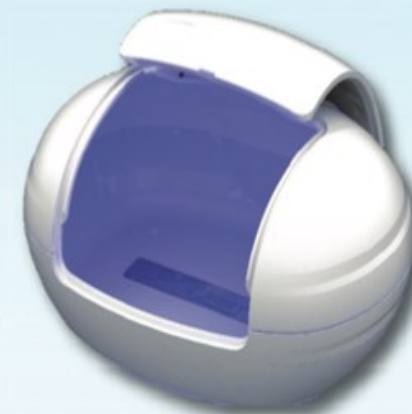
Follow a group of children who are evacuated to a Yorkshire village during the Second World War, where they encounter a young soldier who, like them, is far away from home.

Starring: Jenny Agutter, Tom Courtenay, Sheridan Smith, John Bradley



FLICKS IN THE STICKS

- Relieving stress on joints and muscles
- Relief from muscle and joint strain
- Encouraging easier and deeper sleep
- Supporting your body to release endorphins, which relieves pain and may lower blood pressure.
- The Epsom salts in the flotation tanks which can reduce inflammation and muscle tension



SHROPSHIRE



FLOATS

BOOK ON-LINE OR CALL US TO DISCUSS

01939 291933

Located in Myddle just North of Shrewsbury

www.shropshirefloats.me



Design, Print & Promotional

You think it
We design and print it!

- Flyers
- Banners
- Posters
- Brochures
- Business Cards
- Leaflets
- Newsletters
- Business Stationery
- Promotional Items
- Work Wear

Get in touch to find out more!

SJF Design, Print & Promotional,
Unit 7, Leaton Forest Offices,
Leaton Knolls, Shrewsbury,
Shropshire, SY4 3HX

E: hello@sjfdesignandprint.co.uk W: www.sjfdesignandprint.co.uk
T: 01939 210261/01939 291645

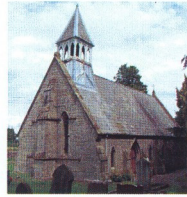
M: 07581 193576



<https://www.facebook.com/SJFDesignPrintPromotional/>

FLICKS IN THE STICKS

St Mary's Church Broughton



Christmas Coffee Morning

Saturday 3rd December

10.30am-12 noon

Admission £3

Includes Tea/Coffee and Cake

Raffle, Cakes, Sales Table & more

Proceeds To

St Mary's Church Broughton Fabric Fund



arts
qLive

FLICKS
IN THE
STICKS

Operation Mincemeat

Cert: 12 - 128 mins



Wed 18th Jan - 7.30 pm

Myddle Village Hall

Admission: Adults: £5 16 yrs and under: £2.50

Enquiries: 07706 450075

Doors open at 7.00pm with film start at 7.30pm.

There will be an interval halfway through the film where drinks and snacks can be purchased.

OPERATION MINCEMEAT tells the amazing true-life scheme cooked up by British intelligence in WWII. Its purpose? To use a corpse to deceive the Nazis into thinking the Allies were planning to attack Europe by way of Greece or Sardinia, rather than their actual target, Sicily.

Starring: Colin Firth, Matthew Macfadyen, Kelly Macdonald



FLICKS IN THE STICKS

FLICKS IN THE STICKS

GWR

Ltd

Fencing, Agricultural & Timber Supplies
Sleep, Nr Harmer Hill, Shrewsbury, Shropshire, SY4 3HE
www.gwrltd.co.uk Email: info@gwrltd.co.uk

GWR LTD KILN DRIED LOGS

The kiln is heated by our
own Biomass Wood Chip
ETA HACK 500kw Boiler

Our Logs are UK grown
hardwood timber, cut 9ins
long, split and then
kiln-dried to well below
20% moisture.



Probably the Best Prices in Shropshire! Ring for Details

Tel: 01939 232800

Mob: 07885 413068 / 07793581177

We also Supply • Posts • Rails • Gates • Sleepers • Logs

St Peter's Church, Myddle



The lights on all the trees
will be switched on
simultaneously at the
start of the service.

Refreshments to be
served at the end.

Looking forward to seeing
you there!

CAROLS & READINGS

Sunday 18th December 2022



at 6.00pm



Christmas Eve

Crib Service

Saturday 24th

December 4.00pm



Come along to help us tell the Christmas story and
build our Nativity scene. The Nativity characters
and the animals all need placing in the stable.
Everyone is welcome and if children wish to come in
costume that would be wonderful. (grown ups, too if
they wish!)

MYDDLEWOOD GARAGE

**Classic Car and M-Bike
Restorations**

Part and Full Rebuilds

Custom and Conversions

Paint and Panel Repairs

Aluminium and Stainless Welding

MOT Preparation

**Servicing and Repairs
to all Makes of Car**

Peter 01939 260873

James, Holyoak & Parker Chartered Accountants

1 Knight's Court, Archers Way, Battlefield Enterprise Park,
SHREWSBURY, SY1 3GA

Providing quality service to business and personal
clients through Shropshire and the Borders.

For further details telephone or e mail

Keith Edwards on:

01743 453933 or
e mail- admin@jhpca.co.uk

Registered by the Institute of Chartered Accountants in England &
Wales to carry out company audit work.

James, Holyoak & Parker is the trading name of James, Holyoak &
Parker Ltd registered in England, company number 5374878

PREMIER GARDEN SERVICES

For all your garden needs.

Grass Cutting	Hedge Cutting	Pruning
Tree work	Planting	Weeding



Contact Andrew

Daytime

Tel: 07817 106 305

Evenings/Weekends

Tel: 01939 291 248



KITCHEN AND BEDROOM REVIVALS

THE HOME OF KITCHEN AND BEDROOM MAKEOVERS

Call **01743 588087**
or **07815 616 481**
and arrange a free quote

We are a Local Family Business...
Offering Quality Products and Service...
Combined with Friendly Honest Advice.....
From our showroom in Shrewsbury.....

Thinking about having a new kitchen?
Think it will be too expensive? Think again!
Think Kitchen & Bedroom Revivals

Most people's cabinets are in good order - so why rip them out with all the cost and mess?

We can supply made to measure replacement doors, drawers and worktops for the fraction of the cost.
We have 37 colours and 25 door styles to choose from.

We also have a large range of work surfaces and are now suppliers of miniQ which is a quality Italian quartz overlay, that is heat resistant and non porous which is an innovative 8mm thin stone that is laid directly over old worn out worktops - available in 17 colours.



Visit our Showroom on
Vanguard Way, Battlefield Enterprise Park, Shrewsbury SY1 3TG
(opposite the Household Recycling centre)

Call **01743 588087** or **07815 616 481** and arrange a free quote

visit our website at **www.kitchen-revivals.co.uk**



0%
~~5% VAT~~ on residential
installs—renewable
energy incentive

- **Installation**
- **Maintenance**
- **Service**

www.specialairconservices.co.uk

Call for a free aircon quote 01939 290193

Myddle

WEM FARMER'S MARKET Town Square MARCH - DECEMBER 2nd SATURDAY EACH MONTH

9.00 - 12.30 hours

Organic Vegetables:
Selection of Meat Products:
Plants and Seeds:
Ice Cream, Cakes & Pastries:
Free Range Eggs:
Honey & Preserves:

FRESH, LOCAL PRODUCE
AT VALUE-FOR-MONEY PRICES

Details: Ring Rhona
01743 367407

3 Self Catering Cottages Newton Meadows Harmer Hill, SY4 3EA

Short breaks, weekly, long term
Chestnut Cottage sleeps 4
Maple and Oak Cottages sleep 7
Level access for the less able
Some ground floor bedrooms
Large garden, beautiful views
Large car park
www.newtonmeadows.co.uk
newtonmeadows@hotmail.com

07851 298 054

No pets and no smoking

Remembrance Sunday

For some years (Covid-19 restrictions permitting) children from Myddle Primary School have gone to the war memorial at St Peter's Church to observe 2 minutes silence on 11th November. This year they were joined by Helen Morgan MP who laid a wreath at the memorial.

The first national 2 minutes silence was held on 11th November 1919 and Armistice Day, as it was then called, was marked with a 2 minute silence each year up to 1939. The silence was widely observed. For example the power was cut to tram lines and so all trams came to a halt and bus drivers were instructed to pull in to the side of the road as 11.00am approached.

During the 2nd World War the commemoration of Armistice Day was moved to the Sunday before 11th November to limit the impact on war work. In 1945 11th November fell on a Sunday and the term Remembrance Day was used to describe a day to remember the dead of two world wars. Remembrance Day continued to be commemorated on the second Sunday in November which would be the closest Sunday to the 11th.

By the early 1980s the meaning of Remembrance Sunday had been extended to commemorate the dead of conflicts after the 2nd World War. This was perhaps prompted by an article in the Times on 8th November 1980 asking how Remembrance Sunday might be given a fresh lease of life.

In the mid-1990s there was a campaign to introduce a national 2 minute silence on 11th November regardless of whether or not it fell on a Sunday. The idea was for a national silence like that observed in the 1920s and 1930s rather than just confined to those attending services on the Sunday. In that way the silence would become a more integral part of daily life on that day once more.

A two-minute silence on 11th November is now widely observed.



Parish Council News Continued...

Jubilee Seats:

The Chairman reported that the two seats purchased to celebrate the late Queen's Jubilee had arrived and would be placed on site in Harmer Hill and Myddle when suitable sites and hard standing had been identified and constructed. It was agreed that the plaque on the seats should now be a Memorial message rather than a Jubilee one.

Allotments:

It was recorded with regret that no volunteers had come forward to take responsibility for chairing a group to try and establish some allotments in the Parish and that consideration for development would have to be put on hold for the time being.

Correspondence:

As always Councillors had been asked to consider and respond where necessary to well over sixty items of correspondence and telephone messages, received by the Clerk since the last meeting.

Planning Applications:

Five new applications, mainly concerned with extensions or alterations had been received for consideration since the last Council meeting and no objections were raised. It was

noted that Shropshire Council had approved five previous applications but had refused approval for a small caravan site in Yorton and the change of use for a property in Myddlewood.

External Audit:

Each year the audit carried out locally has to be inspected by Government appointed officers who are currently based in London and the Clerk confirmed that no concerns had been raised about the financial and overall management of the Council.

A detailed copy of the minutes of the meeting can be found on the Council's web site www.myddleandbroughton-pc.gov.uk and as always the Clerk can be contacted by email at:

myddlebroughtonclerk@talktalk.net or by 'phone on 01743 236810.

The next Council meeting is in Myddle Village Hall on January 4th at 7.30pm.

Parish Council News

In the public session of the latest meeting of the Parish Council, held in Harmer Hill Village Hall on Wednesday November 2nd. Councillor A. Woodthorpe from Baschurch gave an informative talk on the Baschurch Station Campaign and asked Members to consider supporting the plans, which was agreed in principle by Members later in the meeting.

In the full meeting which followed Members dealt with a wide range of issues from across the whole Parish including:

Street Lights:

The massive increase in the cost of electricity which continues to affect everyone had been addressed to a certain extent by switching off the lights at mid-night and by becoming part of a consortium with Shropshire Council. Together these actions will save the Council over £1,000.00 each year. The Clerk reported that one complaint had been received about the new timing of the lights but Members it seemed likely that a further increase in the cost of power was highly likely.

Road Safety:

It was agreed that a VAS unit should be purchased and

erected on Ellesmere Road in Harmer Hill following agreement from Shropshire Council. The unit will be solar powered and can be programmed to display a variety of messages and the cost of the project will be paid from Community Infrastructure Finance, received by the Council following past building projects.

Members were pleased with the 40mph buffer zone which had been created on Ellesmere Road travelling from the Myddle direction which appears to be having the required impact on vehicle speed.

There was still concern that the passing bay on Lower Road was still being used by some residents as a parking area, causing problems for residents living in The Pines. However because it is not an official parking area, the police are unable to take legal action but it was noted that criminal action had been taken by someone painting out the signs.

Play Areas:

Cleaning and re-painting plus some minor repairs had been carried out by Mr. Armando Meci and a Mr. Ray Parry, who installed the Play Areas, has been asked to deal with a few outstanding equipment repairs.

R. GREAVES & Co. Dip FAA

Your Local Independent Lady Funeral Director

Having been in the funeral profession since 2002, Rhian offers a complete bereavement service to the local community.

As a female funeral director, Rhian has a compassionate understanding of grief and you can have peace of mind knowing your loved one is being looked after by a lady.

- Pre paid funeral plans by Golden Charter, existing plans welcome
- On site memorial showroom
- Private dedicated chapel of rest
- All areas covered
- Polski tłumacz dostępny

a professional and compassionate service

call day or night

01939 768070

40 High Street, Wem, SY4 5DG www.rgreaves.co.uk

£10.00

from every funeral plan
will be donated
to Hope House
Children's Hospice



LEATON KNOLLS ESTATE

Unit 3, Leaton Forest Offices, Leaton, Shrewsbury

SY4 3HX tel: **01939 290384**

www.leatonforest.co.uk

leatonestateoffice@leatonforest.co.uk



Firewood, Kindling and Logs



Albion Hayes Our Holiday Cottage
and Residential Rural Cottages to let
near Shrewsbury and Bomere Heath

Earlsdale Garden Services

Tree/Hedge work

- *Lopping *Topping *Pruning *Tall trees reduced
- *Hedges shaped/reduced

Garden Work

- *Fencing erected/repared *Slabbing *Paving/paths
- *Shed bases *Patios/patio relaying *Patio cleaning *Gravelling
- *Turving *Gutter cleaning
- *24hour storm damage *Garden clearance *Make over
- *All aspects of carpentry
- *Registered waste carrier

ALL WORK FULLY INSURED

For a free quotation
Tel 01743 792924/07702373856
earsdalegardenservices@live.co.uk



Walkers Wines Ltd


"Shippers and Merchants of Fine Wines"

Independent family run Wine Merchants based in Harmer Hill,
offering wines by the case and free deliveries to the local area.

For wine list and enquiries:

Tel: 01939 290959

Email: walkerswinesuk@gmail.com

 : Walkers Wines Ltd

We will not sell or deliver alcohol to anyone under the age of 18.



Furniture shop

29, High Street, Wem

- We welcome donations of furniture, household items and bric-a-brac.
- All money raised will go towards helping our Rural Community across Shropshire & West Midlands.

Opening time:

Monday –Saturday 9:30 – 4:30pm

For a **free** collection call us on 01939 236559

The Rural charity shops are managed by the Shropshire & West Midlands Agricultural Society and all funds raised go to the Charity Reg No 702372.

EST  1936

Frank Painter & Sons

FUNERAL DIRECTORS
Spring Gardens, Shrewsbury
01743 362024

— Incorporating —

Grindalls of Wem

FUNERAL DIRECTORS
Aston Street, Wem
01939 233903

4th Generation family owned
bereavement service, covering all areas
Day or Night

www.frankpainterandsons.co.uk

Golden Charter 
Funeral Plans Available

P. J. HALL

Electrical Contractor

- All aspects of electrical work undertaken
- Domestic or commercial
- Extra sockets ,lights. etc
- New builds
- Extensions
- Rewires
- Showers
- Consumer unit (fuse board) upgrades
- No job too small or large
- Competitive rates
- All work guaranteed and insured
- NICEIC domestic installer
- Part 'p' registered
- Established 30 years



10 Myddlewood
Myddle
SHREWSBURY
SY4 3RY

Please call me if you have
any queries on.....

Tel: 01939 261405
Mob: 07974 251789

PEST PROBLEM?

Solve it with...

Shropshire Mole and Pest Control

Domestic, agricultural and
Commercial, Local,
professional and affordable!!

**Wasps, Hornets, Rats, Mice,
Rabbits, Squirrels, Ants and
Cluster Flies.**
Mole control expert.

*"Don't make a mountain out of a
Molehill"*

Call Alan now on 01939 328188
mobile 07976 817859
shropshiremolecontrol@gmail.com
www.shropshiremolecontrol.co.uk



MOT CENTRE



BRAKES



EXHAUSTS



REPAIRS



DIAGNOSTICS



SERVICING



BODYSHOP



TYRES

A FAMILY RUN BUSINESS FOR OVER 40 YEARS

26-28 Aston Street, Wem, SY4 5AY



t. 01939 233243

www.hanmerautoservices.co.uk





Domestic & Commercial Builders

WebbPS can offer you the full construction package. From technical drawings and securing planning permission through to construction and delivering you with your completed dream project.



- Technical drawings - Planning advice and applications - Building regulation applications
- Extensions - Refurbishments - Historic building works - Structural Alterations

Based in Shropshire.

Email: info@webbps.co.uk Tel: 01939 270223

www.webbps.co.uk



SELF DEFENCE for KIDS & ADULTS



KOREAN MARTIAL ARTS

LITTLE LIONS for 3-6 yrs

MAIN CLASS for all

For details, please contact us:

07775 724447

salopkma.co.uk

salopkma@gmail.com



CALL 01743 365 813

EMAIL info@portland-fp.co.uk

VISIT www.portland-fp.co.uk

Portland Financial Planning Ltd.
are authorised and regulated
by the Financial Conduct Authority

Specialist advisers
to the mature and
retired market.

Has COVID-19 made you think
about your finances differently?

Get in touch for open
and honest advice.



CALL 01743 365 813

EMAIL info@portland-fp.co.uk

VISIT www.portland-fp.co.uk

Portland Financial Planning Ltd.
are authorised and regulated
by the Financial Conduct Authority



HARMER HILL VILLAGE HALL

www.harmerhill.com email: harmerhill.vh@gmail.com

Tel.07835969131



CHRISTMAS BINGO
FRIDAY 2nd December 7.30pm
with a Prize of £50



The first Bingo of 2023 will be
FRIDAY 27th January 2023 7.30pm

PARTNER WHIST
FRIDAY 27th January 7.30pm



To enquire about making a booking, either for regular or occasional use or a private party/event please Email: harmerhill.vh@gmail.com or leave a message on Tel.07835969131

Myddle Friendship Club

The clubs next meeting is on January 5th at 2pm in Myddle Village Hall, with Andy Johnson doing a talk on life as a fireman.



People are welcome to join for £2, which includes tea, coffee and cake on the day. Alternatively you can become a member for a year for just £10!

Harmer Hill & District W.I.

All ladies are welcome to join us.

The next meetings are on December 8th & January 12th

December we are meeting at The Croft in Hadnall for our Christmas meal.

January we kick off 2023 with a fun evening of games

theWI
INSPIRING WOMEN

with Curling at the Village Hall at 7.30pm

Make it your New Years resolution to do something different!!!

[Contact to join](#)

Jenny Walsh
07714 108507 / 01939 210649

Need an Electrician or Handyman?

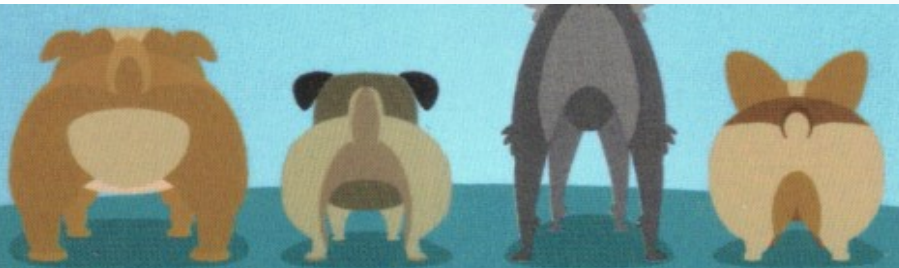
New Consumer units
Extra sockets/lights
Electric showers

Heating
Security
Fault finding & repairs

Other handyman services available
e.g. painting & decorating

For a reliable and professional service
No job too small

Contact David Barber
Tel: 01939 220429 Mobile: 07722 943758
dhbarber@btinternet.com



Hut4Mutts

Dog Grooming Service
Tel: 07891665541

Email: hut4mutts@gmail.com

Macmillan Coffee Morning - St Mary's Church, Broughton

A sincere thank you to everyone who supported the Macmillan Coffee Morning on 30th September, when, together with donations and lots of baking £362 was raised for the fund.

Even if the weather was not on our side, it was a very happy social event!

Rosemary.

Pauline
07745 585287 / 01939 290643

Elizabeth
07964 137758 / 01939 291144



*Dead Safe Wills
& Legal Services*

Still haven't got around to making your Will?

Then have it professionally prepared for you in the comfort of your own home by Peter Savage your local Estate Planning expert.

**Full Will Writing Service
All Associated Legal Services
Powers of Attorney**

**Tel: 01743 233 245
or 0800 781 9371**

Special offer: 10% off cost of Wills with this advert



M&M TOOL HIRE

Tool & Machinery Hire

Machinery Repairs

Service & Parts

Calor Gas Sales

**Unit 5, Leaton Hall Farm, Bomere Heath,
Shrewsbury, SY4 3AP**

Opening Times
Mon - Frid 8am - 5pm
Sat 8am - 12pm

01939 290120

Find us on @M & M Tool Hire

matthew@m-mlandscaping.co.uk www.mandmtoolhire.co.uk

Gemini Hair & Beauty Ladies & Gents

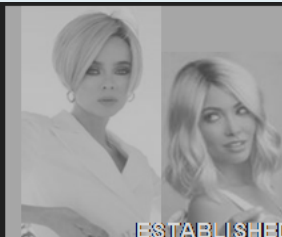
ESTABLISHED 1980



**Bespoke Hair &
Beauty Treatments**
in a
**Relaxing, Professional &
Friendly Salon**



52 HIGH STREET
WEM
SY4 5DW
01939 232186



ESTABLISHED 2007

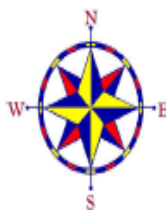
**GETTING BACK YOUR
CONFIDENCE**

WITH GEMINI HAIRDRESSERS
WIG CONSULTANCY, STYLING
HEADWEAR & ACCESSORIES

PRIVATE ROOM



52 HIGH STREET
WEM
SY4 5DW
01939 232186
@GBYCwithgemini



IAN ELLIS LIMITED

Planning & Building Surveying Services.

**Planning Applications &
Building Regulations Work**

Mobile 07841636780
Email ellis.ian23@btinternet.com

Webscott Macmillan Coffee Afternoon. Thank you, thank you, thank you to family, friends, neighbours, and friends of friends, for, supporting us, all the amazing raffle prizes, cakes and donations. A special thank you to Woods Butchers, Shawbury, The Pastry Box, Wem, Seasons Florist Wem for their raffle donations. And to The Team, [Ellie Griffiths](#), and Peter Edwards, without you I could not manage. 🙏. (To Sue Jones, and Carol Williams, who got roped in to. Thank you.) We had a very wet, but lovely afternoon catching up with you all. And we raised a fantastic £750. !!! You are all amazing. 🍌 🍌 🍌



St Peter's Myddle

Churchyard Tidy

No tidy in December-see you in the New Year!
21st January 2023: 10-12. Bring your spades and lines for doing the edges of the paths. I think I can say we are getting there!

Church Flowers

Advent begins 27th November so no flowers, but we will be coming together to decorate the church with Christmas trees etc the week beginning 12th December.

Saturday 17th December: All help welcome to tidy the church in readiness for Christmas and provide any additional decorations once all the trees are in place.

7th/14th January 2023 - Mrs Lynda Oldham
21st/28th January 2023 - Miss Kay Morris

Harmer Hill Village Tote

Please contact Ruth on 01939 290267 or 07973 665641 for any queries.

Here are the winners of the November draw:

1st - £70	No. 080	Paula Turner
2nd - £35	No. 204	Mrs N.Titley
3rd - £25	No. 286	Viv McCarthy

There will also be a draw in December of £100!

Best wishes and thank you to all this year's Tote subscribers - from HH village hall management committee.

HARMER HILL WINDOW AND DOOR REPAIRS

40 Years Experience in the industry

RATHER THAN RENEWING, TRY REPAIRING AS THIS WILL SAVE YOU TIME AND MONEY!

ALL TYPES OF UPVC WINDOWS AND DOORS, DOUBLE GLAZED UNITS INCLUDING HANDLES, WINDOWS ESPAGS, DOOR LOCKS AND HINGES, NO JOB TOO SMALL.

ALL WORK GUARANTEED

PLEASE CALL TONY

07877760931

T.H. GRIFFITHS ENGINEERING MYDDLE

MOBILE WELDING

*For all your domestic, farm
or business engineering
enquiries, call Henry*

Tel: 01939 290740

Mobile: 07973 541202

DARREN TOWNSEND

Painter & Decorator

All aspects of interior
or exterior decoration
undertaken



Ruyton X1 Towns, SY4 1LX

Home no. 01939 260922

Mobile 07795 262629

**Email: darrentownsend18
@hotmail.com**

BRIAN WILLIAMS



**Councillor for Myddle, Harmer Hill and Yorton
on Shropshire Council.**

**I am always pleased to hear from any resident who has
a matter of concern which they think that it is
appropriate for their Councillor to deal with.**

I will be glad to help and advise if I can.

**As I do not hold an advice bureau, please telephone me
on my home number**

01939 234198

**and leave your name and phone number on my answer
phone if I am not available.**

**I will phone back as soon as possible and, if it will be
helpful, I will come to see you.**

**Or alternately,
Please e-mail me at**

brian.williams@shropshire.gov.uk

Myddle & Broughton Parochial Church Council Donations

The Parochial Church Council did not receive any donations since the last edition of The Messenger was published.

Donations to help the church are always welcome!

You can always donate via:
<https://www.justgiving.com/fundraising/stpeterschurchmyddle>

or by BACS transfer to- Account Name:
Myddle and Broughton Parochial Church Council
Sort code: 30-96-26
Account Number: 78218160

or by cheque
payable to Myddle and Broughton PCC



Tree of Light

As in previous years, the large tree outside St Peter's Church will be decorated with Christmas lights. If you would like to contribute to keeping the lights shining by sponsoring a light in memory of a loved one, envelopes can be found at the back of the church or obtained by speaking to the churchwardens, or any member of the PCC. The names will be shown inside the church porch.

Useful Contacts Page

Rector Reverend Adam Clayton 01939 291390/
revajbclayton@gmail.com

MYDDLE, St Peter's

Churchwardens Mrs Christine Williams 07791 403898
Mrs Linda Savage 01939 290094
PCC Secretary & Pastoral Visitor Mrs Margaret Parson 01939 290818
PCC Treasurer Mr Greg Miller 01939 290789

BROUGHTON, St Mary

PCC Treasurer Mrs Elizabeth Howe 01939 291144
Pastoral Visitor Mrs Rosemary Narburgh 01939 220382

LOPPINGTON, St Michael & All Angels

Churchwardens Mrs Trace Barton 01939 270839
Mr Bob Parker 01939 236893
PCC Secretary Mrs Pene Parker 01939 236893
PCC Treasurer Mr Dick Barton 01939 270839
Gift Aid Treasurer Mr Peter Butters 01939 236240
Pastoral Visitor Mrs Helen Lopez 01939 233 685

NEWTOWN, King Charles the Martyr

Pastoral Visitor Mrs Margaret Fox 01939 233419
Churchwarden Mr Tim Wastling 01939 235475
Sunday School Leader Mrs Shirley Clorley 01939 232237
PCC Secretary Mrs Heather Pitchford 01939 233089
PCC Treasurer Mr David Howson 07970 787845

BURLTON, St Anne

Trustee Mrs Lesley Eyre 01939 270314
Gift Aid Treasurer Mr Philip Benson 01939 270310

North Shropshire Heating and General Plumbing

Specialists in oil fired
heating systems.

All aspects of general
plumbing work undertaken.

Jim Parkes

Tel: 01978 722598
Mob: 079290 16814



MB

**Marco Busi
Garden & House
Maintenance
Based in Harmer Hill**

Don't DIY – I Do!

**Trustworthy, Reliable,
Fully Insured.
Any enquiries, big or small,
just give me a call.**

**07548 763562
marcobusi@hotmail.co.uk**

The Secret Salon.
at Mortimer House (next to doctors)

High street | Clive | SY45PU

Luxury, friendly, hair and
beauty salon, for men and
women.



To book an appointment please call
01939 220033 or use the booking system on
our Facebook page.



HORSE LIVERY DIY or Part Broughton Farm, Harmer Hill

- Floodlit all weather schooling arena
- Large stables in courtyard setting
- All year grazing in safe paddocks
- Excellent hacking with fields and tracks
- Family run arable farm

**Tel: 01939 220250
Or 01939 220131**

Ang's Foot Health
Mobile Foot Health
Practitioner
07730795142
info@angsfoothealth.co.uk



For professional treatment
nail trimming, fungal nail
treatment, calluses,
cracked heels, corns,
verruca

S.A.C Dip RFHP

Registered Foot Health Practitioner S.A.C. Dip

Ang's Foot Health
0 7 7 3 0 7 9 5 1 4 2
info@angsfoothealth.co.uk

Mobile Foot Care. Treatment in the
comfort of your own home



Useful Contacts Page Continued..

Harmer Hill Village Hall

www.harmerhill.com harmerhill.vh@gmail.com 07835 969131

Myddle Village Hall

Clare Simcox mvhbookings@myddle.net

PARISH COUNCIL

01743 236810

Chairman Colin Ruck
(colin@ruck.me.uk)
Clerk Jack Wilson
(myddlebroughtonclerk@talktalk.net)

OTHER Contacts

WI Jenny Walsh 01939 210649



Lionel Binns
3 Quarry Close
Myddle
Shrewsbury
SY4 3SB

All aspects of property maintenance and services undertaken
including:

- Interior and Exterior Decorating
- Wall and Floor Tiling
- Kitchens
- Bathrooms
- Fencing
- New build snagging

25 years experience. No job too small.
Contact Lionel on 07801 188325 / 01939 290811

'From a dripping tap to a full house renovation'

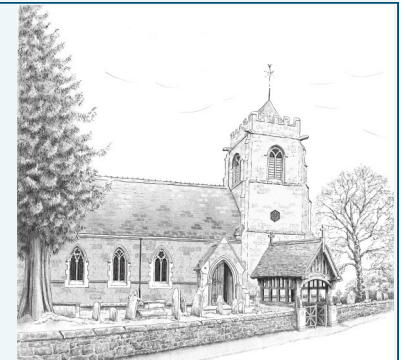
Note from the Editor

Hello readers,

This is the first edition where we are to have some colour for the first time! We are very excited to see this advancement thanks to the Parish Council and the Parochial Church Council. We will start with a six month trial of some of our pages and then see what happens from there.

We hope you enjoy it just in time for Christmas and that you have a wonderful Christmas time and New Year. We look forward to seeing you again in February 2023!

Your Editor, Danielle



Dec/Jan 2022 - Pastoral Letter

As we enter December you may be breathing a sigh of relief that this year is nearly over and looking forward to Christmas with a little more certainty than last year. It has certainly been a year of ups and downs, feeling at times like a game of Snakes and Ladders. Some form of normality is reached and then – just like with one roll of the dice – you are sliding back down and you have to start all over again and change plans. All the uncertainty we've had puts a new perspective on the Christmas story itself, because you realise how disrupting the events of the first Christmas were for those involved.

Mary and Joseph were engaged to be married, they no doubt had their plans for what their lives would look like, until the angel Gabriel turned up and sent all their plans out the window. Then, just as they were getting used to the idea that they would have a baby, the emperor ordered a census, so they had to set off away from home on the long journey to Bethlehem. Not what they had planned at all.

Or what about the shepherds, sat in their fields just doing their job until the angels appeared and sent them running into the village to find the new-born Jesus. Then there were the wise men, sent on a perilous journey to a far-off land because of the appearance of a new star in the sky. None of these people could have predicted or planned what would happen to them, but when the disruption came they went with it and in doing so they met God face to face.

We all approach Christmas with our own sets of expectations and hopes, rituals and traditions, and after all we've been through this year it may feel we want to be able to celebrate in the ways that we usually do. Whatever happens this Christmas, let it give us an opportunity to learn anew from Mary and Joseph, the wise men and the shepherds, and to allow the strange turns our lives have taken this year to lead us closer to the God who is always with us. Every blessing,

Adam Clayton
Rector of Myddle



Harmer Hill Chapel

God's Son who came to change lives and change the world. After all, when you think about it, Jesus is the reason for the season. The way, the truth and the new life that can begin with Him. Often the missing ingredient for a happy Christmas.

Rev. David Slim

All Sunday Services are held at 10 a.m. unless otherwise announced, followed by refreshments in the Village Hall

December/ January Services

SUNDAY 4TH DECEMBER
SECOND SUNDAY OF ADVENT-
ALL AGE WORSHIP – Mr. R. Purslow

SUNDAY 11TH DECEMBER
THIRD SUNDAY OF ADVENT –
HOLY COMMUNION- Mrs. J. Slim

SUNDAY 18TH DECEMBER
FOURTH SUNDAY OF ADVENT –
CAROL SERVICE 3PM – Rev. D. A. Slim

SUNDAY 25TH DECEMBER
CHRISTMAS DAY MORNING
WORSHIP – Rev. D. A. Slim

SUNDAY 1ST JANUARY
ALL AGE WORSHIP – Mr. R. Purslow

SUNDAY 8TH JANUARY
MORNING WORSHIP – Mrs. J. Slim

SUNDAY 15TH JANUARY
HOLY COMMUNION – Rev. D.A. Slim

SUNDAY 22ND JANUARY
MORNING WORSHIP – Mr. R. Purslow

SUNDAY 29TH JANUARY
HOLY COMMUNION – Mrs. J. Slim

The Elders

Mr Russell Purslow
01939 290574

Mrs Joy Slim
Rev. David Slim
01939 291 174



Harmer Hill Chapel

Any time soon you will be preparing your home for Christmas. Just as we take this seasonal opportunity to prepare our homes for an important event, God offers us the opportunity to prepare our lives to receive Jesus Christ as His season begins.

God wants us to have something real, personal and lasting to celebrate so even in the hurly burly of the run-up to Christmas and before you miss it for another year, take some time with God to search out those areas of your life where you have let the cobwebs hang, the dust settle and the rubbish pile up. You probably know where and what they are already.

Perhaps you need to reflect on your attitude to your family, friends and neighbours. Never mind how they have been treating you. How have you been treating them? Maybe you need to look at some of the situations that have arisen in your life and think about how you are responding to them. Have you been positive or negative and where have you gone for help?

Now is as good a time as any to offer all this to God and to seek

His help with anything that may prevent you from receiving Jesus into your life this Christmastide.

Are there relationships that have gone wrong? Christmas is a good time to put them right. Is there a situation that requires positive action? Where in your life is there a need for repentance and forgiveness? For you and for others. Now is a good time to admit it and do something about it. Everyone's life needs to be made ready in the same way we make a house ready before the special day arrives.

In the wilderness of preparation for our modern Christmas a voice still cries out, "Make a straight way for the Lord." It's the voice of God calling His people. It's God calling you! If you ignore Him now, what will the birth of our Lord and Saviour mean to you? What will it achieve? Are you just preparing for just another Christmas full of upset and envy and the feeling that you will be glad when it's all over?

This Christmas could be a special one. Special because you have taken the time to listen to God, to hear His call and to prepare your life to receive the gift of

The Benefice of Myddle and Broughton, Loppington and Newton Possible Services up to Christmas

*Check on your noticeboard in case
of last-minute changes*

December 2022

Sunday 4th Advent 2
09.45am
Family Worship, Burlton
10.30am
Family Service, Loppington
10.30am
Holy Communion, Myddle

Sunday 11th Advent 3
10.00am
All age Worship, Newtown
10.30am
Matins, Loppington
11.00am
Parish Worship, Myddle
03.00pm
Christmas Service, Broughton

Sunday 18th Advent 4
03.00pm
Carol Service, Loppington
06.00pm
Carol Service, Myddle

Saturday 24th Christmas Eve
03.00pm
Christingle, Newtown

03.30pm
Crib Service, Loppington
04.00pm
Crib Service, Myddle

Sunday 25th Christmas Day
10.30am
Holy Communion, Myddle

January 2023

Sunday 1st Christmas 2
03.00pm
New Year Service, Loppington

Sunday 8th Epiphany
09.45am
Holy Communion, Loppington
11.00am
Parish Worship, Myddle
11.15am
Holy Communion, Newtown
03.00pm Evensong, Broughton

Readings: Isaiah 60:1-6
Ephesians 3:1-12 Matthew 2:1-11

**L.R. POWLEY
& CO.**

Electrical Contractors

Proprietor Neil Parker
Unit 3c, Vernon Drive
Battlefield Enterprise Park
Shrewsbury, SY1 3TF

Tel: 01743 462379
07966244087



Anything Electrical,
Domestic, Commercial,
Agricultural, Industrial,
New Installations, Rewires & Repairs, Fire
Alarms & Emergency Lighting Systems,
Inspection & Testing. Also Electric Vehicle
Charging Points



**Fire Alarms and
Emergency
Lighting Systems**

**Baschurch Tennis
Club**

Welcomes new members !!

A family friendly club for all
ages and abilities

An active club membership with
thriving junior section

Professional coaching for
adults and juniors

Floodlit tennis courts

Please Contact:
Brendan Markland:
07710 243023

Head Tennis Coach:
Sarah Hardie 07951 264209

**Would you like to Advertise in
The Messenger?**

Contact Margaret or Danielle for
more information
Phone: 07453 676 303
E-mail:
adsinmessenger@gmail.com

Costs per annum:
Full page £95. Half £65. Quarter £45.

Monthly cost:
Full page £12. Half £8. Quarter £6.

editorthemessenger@gmail.com

**STYLE CARE
HAIR & BEAUTY**

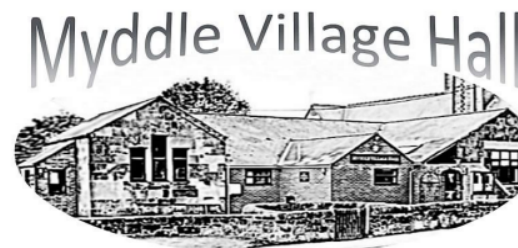
33 Shrewsbury Road,
Bomere Heath, SY4 3NX

Cuts | Ladies | Gents | Children
Colouring | Full Head | Full Foils
Semi Permanent | Perming | Setting
Wedding Hair | Balayage

OPENING TIMES

Tuesday	9.00 am — 5.00 pm
Wednesday	Closed
Thursday	9.00 am — 6.00 pm
Friday	9.00 am — 5.00 pm
Saturday	8.30 am — 3.00 pm

Contact: Ruth Davies
01939290664 / 07735459998



Flicks in the Sticks – Wednesday 21st December, 7:30pm start.

The film **The Railway Children Return** (cert PG – 95 mins) will be shown. Follow a group of children who are evacuated to a Yorkshire village during WW2, where they encounter a young soldier who, like them, is far away from home. (See film poster for details).

Adults £5 each, children age 16 and under £2.50. Refreshments will be available from the bar.

The film **Operation Mincemeat** (cert 12 – 128 mins) will be shown on **Wednesday 18th January, 7:30pm start.** An amazing true-life scheme cooked up by British intelligence in WWII to deceive the Nazis about the planned invasion by the Allies. Starring: Colin Firth, Matthew Macfadyen, Kelly Macdonald.

Christmas Fayre – Sunday 4th December, 12:00 – 4:00pm.,
organised by Myddle School Parent and Teachers Association (PTA).

Myddle Youth Club – Friday evenings.

For information contact email MYC.myddleyouthclub@gmail.com

Why not book the Village Hall for your event.

Contact the Booking Officer Claire Simcox by Email
mvhbookings@myddle.net . Booking forms are available from
www.myddle.net Village Hall section.



All aspects of building work undertaken including extensions, new builds, bathrooms, wet rooms, aids and adaptations and property maintenance.

With over 25 years experience
call Phil Lansdale on 01939 220356 or 07863 180079
Haystacks, Meadowfield Court, High Street, Clive, Shrewsbury SY4 3JL
For a free No Obligation Quotation

Harmer Hill Village Indoor Bowls Club

This Group meets
Thursdays
2.00pm-4.00pm
in
Harmer Hill Village Hall

New members most welcome

Come along and give it a try
For further info

Tel 01939290574

ROSS HINES CHIMNEY SWEEPING

CLEAN CHIMNEY ARE SAFE CHIMNEYS
BRUSH AND VACUUM – LEAKAGE TESTING –
NESTS REMOVED –COWLS, BIRD GUARDS AND
CAPS SUPPLIED AND FITTED. OPEN FIRE, MULTI
FUEL STOVES, AGA, DOMESTIC AND
COMMERCIAL.

FULLY INSURED WITH NFU, CERTIFICATES
GIVEN.
FOR A FAST, FRIENDLY AND CLEAN SERVICE
OR JUST HELP AND ADVICE.



CALL 01939 768319
24 THE WHEATLANDS, BASCHURCH,
SHROPSHIRE.
N.A.C.S. MEMBER: 12/05



DSD Plumbing & Heating Ltd

Damien: 07949791029

Shaun: 07888895798

E-Mail: dsdheatingltd@hotmail.co.uk

All works undertaken, no job too small.
Fully insured and qualified for over 15 years.
From tap washers to full central heating systems we cover all aspects of plumbing and heating.

Find us on:





The Messenger needs you!

We have been ran by a steady team for many years now and are looking for some fresh help / faces to help volunteer with the newsletter.

We are looking for potential assistance with distribution, content or invoicing– if you have some free time and want to be involved in something a little different, let us know!

Volunteers don't necessarily need to be local to the villages of The Messenger, so if you know someone in Shropshire or nearby who would like to get involved, let them know to get in touch with us.

You can contact by phone:
 Greg : 07940 156373 / Danielle: 07453 676303
 Chris: 07791403898 / Linda: 07817150992

Or email: editorthemessenger@gmail.com



Growing, learning and living in the love
of God'
 Myddle, Shrewsbury, Shropshire.
 SY4 3RP

Contact the School on 01939 290834
 or email: admin@myddle.shropshire.sch.uk

Contact our Nursery on 01939 290268
 or email
pre-school@myddle.shropshire.sch.uk

For more information please visit our website:
www.myddleschool.org.uk

"Behaviour and attendance are of a very high standard. Pupils live out the school's Christian values, 'Growing, learning and living in the love of God'. Parents spoken to were overwhelmingly positive about the school and your leadership. Pupils and Parents welcomed the extensive curriculum, which offers pupils of all ages numerous indoor and outdoor experiences. The forest school is especially popular and contributes to the consistently high outcomes achieved in science."
 Ofsted report July 2017



S. CROFT GROUNDWORKS

MYDDLEWOOD 01939 260592 / 07850 122332

Residential & Commercial Groundworks
 New Build House infrastructure up to DPC

- Extensions
- Drainage
- Earthworks
- Site clearance
- Concreting
- Sewer connections
- Brick pavings
- Slabbing
- Pattern concrete
- New driveways
- Pools & Waterfalls
- Artificial rock work

St Peter's Church, Myddle



Christmas Trees

We are once again hoping to fill our Church with Christmas trees - of all sizes and styles - traditional and modern design. We are making contact with those who have kindly provided and decorated trees in the past, but would love to hear from any group or family who would like to put a tree in our parish church. Contact Linda 290094 or Chris 290813

They need to be in place in time for our service of

CAROLS & READINGS

Sunday 18th December 2022 at 6.00pm



Could you help a child like Leila learn to read?

Coram Beanstalk believes that when a child becomes a reader, they get the very best chance in life, and every child deserves that.

Can you spare a few hours a week to help a local partner primary school inspire children to become readers?

Some children need extra help to see reading as something they want to do, and to keep going when they can't see the point.

By giving a few hours a week you could make a real difference to how well children do at school and in life.

We'll train you to set children up to succeed... sharing, talking and having fun with books to help them see the point of reading.

coram
Beanstalk
creating readers



Make a difference to a child's life, and to yours.

To apply or for more information please visit

[Register to become a Coram Beanstalk reading helper volunteer \(beanstalkcharity.org.uk\)](https://beanstalkcharity.org.uk)

"COFFEE DROP IN"

We are starting a "Coffee Drop In"
in Myddle Church every second Thursday
of the month 10.30am-12.00pm



Drop in for a coffee/tea/biscuit,

Catch up with friends

and have a natter!



Sign up now for your Free E-Newsletter!

If you would like to receive the Myddle, Broughton and Harmer Hill Electronic Newsletter, directly to your inbox, all you have to do is send your name and email address to:

contact@myddle.net

The E-Newsletter provides you with up-to-date information about what is going on in your parish and county, with links to the county planning portal, Gough Walks, useful contacts in the parish, from Doctors Surgeries to Bus timetables and the latest Covid-19 restrictions.

Over 200 homes in the parish are already receiving this **FREE** E-Newsletter. You can read it directly from your computer, tablet or smart phone - no need to print it!

Sign up today and rest assured that this is a parish run newsletter and your email addresses will not be distributed to anyone else. If you are already receiving the E-Newsletter you do not need to send your address again.

Colin Ruck



Call **Rix Oakleys** for a great service you can **trust**

01630 409 108



Gas Oil & Gas Oil+



Diesel & Unleaded



Lubricants & Additives



Fuel Tanks

Your **local** fuel, heating oil and lubricant **specialist**. www.rix.co.uk



Delivery service available



SHROPSHIRE'S
FENCING
SPECIALISTS
Over 30 years
Experience

Fencing supplied & erected or supplied only



CONCRETE POSTS AND GRAVEL BOARDS
Large stocks of concrete in a variety of sizes held on our site for immediate delivery or collection.

KILN DRIED AND PART SEASONED HARDWOOD LOGS AVAILABLE

IN 1.25M AND 2.5M LOADS BULK BAGS AND NETS. DELIVERED OR COLLECTED. NETS OF LOGS AND KINDLING TO RETAIL FOR SHOPS,

FREE NET OF KINDLING

ON EVERY LOAD OF LOGS ORDERED BY QUOTING "MYDDLE MESSENGER"

FENCE POSTS

Round and Half Round Posts and Rails. Machine Rounded or traditionally Cundey peeled. Produced on site. We can cater to all needs, from one post to full lorry loads.



GARDEN PANELS

A wide range of Fence Panels to suit your needs and budget.



For more info call, visit our website or pop in to see us - we will be happy to help!

Opening Hours

Monday - Friday
7:30am - 5pm

Saturday :
8am - 1pm

D J PRICE, The Compound, Soultton Road, Wem SY4 5SD

Tel. 01939 235 720

Email: daprice6@gmail.com

www.timbersuppliesuk.co.uk



Duncan Galliers
Upholstery

Master Upholsterer & Furniture Restorer

Specialist in traditional techniques for antique & modern furniture. Loose covers, Leather & Spring repair, foam cut to size and sundries!

Call **01743 353981** or email to duncangalliers@aol.com

A.D.T CARPETS

4 Morris Shopping Park,
Wem 01939 233661
Ellesmere 01691 624422

Excellent Quality
FREE FITTING
Open daily 9-5. Weds ½ day.